

Rhwystrau rhag dylanwadu ar
gyfraniadau Adran 106 a brofir gan
weithwyr proffesiynol cynllunio ac
iechyd a nodi unrhyw
atebion/camau ymarferol

Polisiâu cynllunio gofodol, iechyd y cyhoedd a'r gwasanaeth iechyd:
cyfleoedd i wella iechyd a mynd i'r afael ag anghydraddoldebau

8 Chwefror 2024

Barriers to influencing Section 106
contributions experienced by
planning and health professionals
and identifying any
solutions/practical steps

Spatial planning, public health and health service policies:
opportunities for improving health and addressing inequalities

8th February 2024

Amcan:

- Codi ymwybyddiaeth o'r cyfleoedd i gynnwys iechyd (yr abwyd)
- Beth yw cyfraniadau gofal iechyd S106 (y ffon), pryd y dylid eu hystyried a beth allant ei gyflawni
- Prawf cyfreithiol
- Rhwystrau a chyfleoedd
- Gweithdy – 2 astudiaeth achos ddamcaniaethol

Objective:

- Raise awareness as to the opportunities to build health in (carrot)
- What are healthcare S106 contributions (stick), when should they be considered and what can they achieve
- Legal test
- Barriers and opportunities
- Workshop – 2 hypothetical case studies

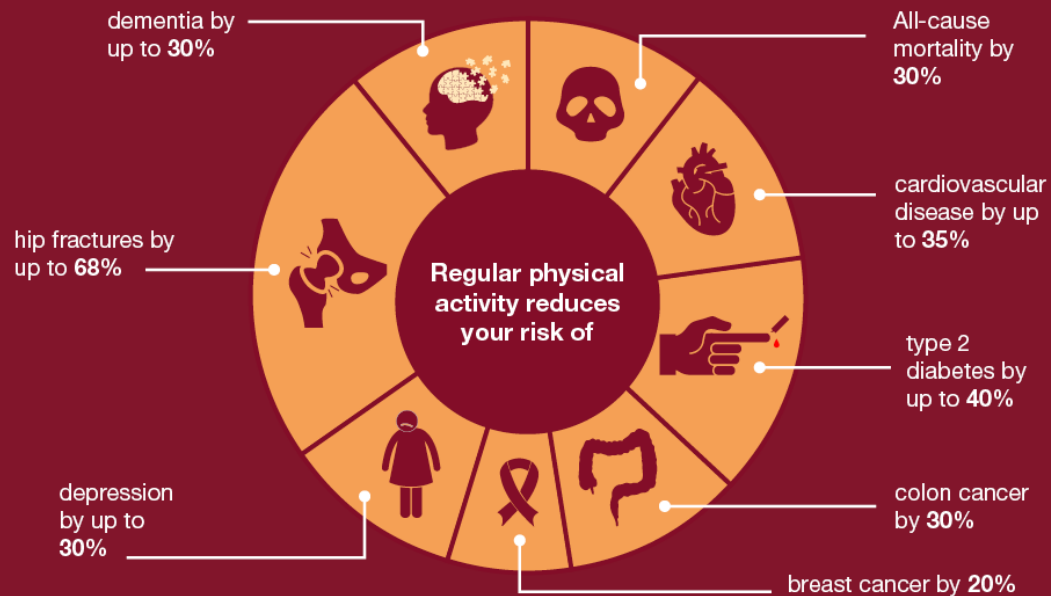


What is Health and Healthy Urban Design

Beth yw Iechyd a Dylunio Trefol Iach



What are the health benefits of physical activity?



Public Health

“the art and science of preventing disease, prolonging life and promoting health through the organised efforts of society” (Acheson, 1988)

- Health Protection
- Health Promotion
- Health Care

Iechyd y Cyhoedd

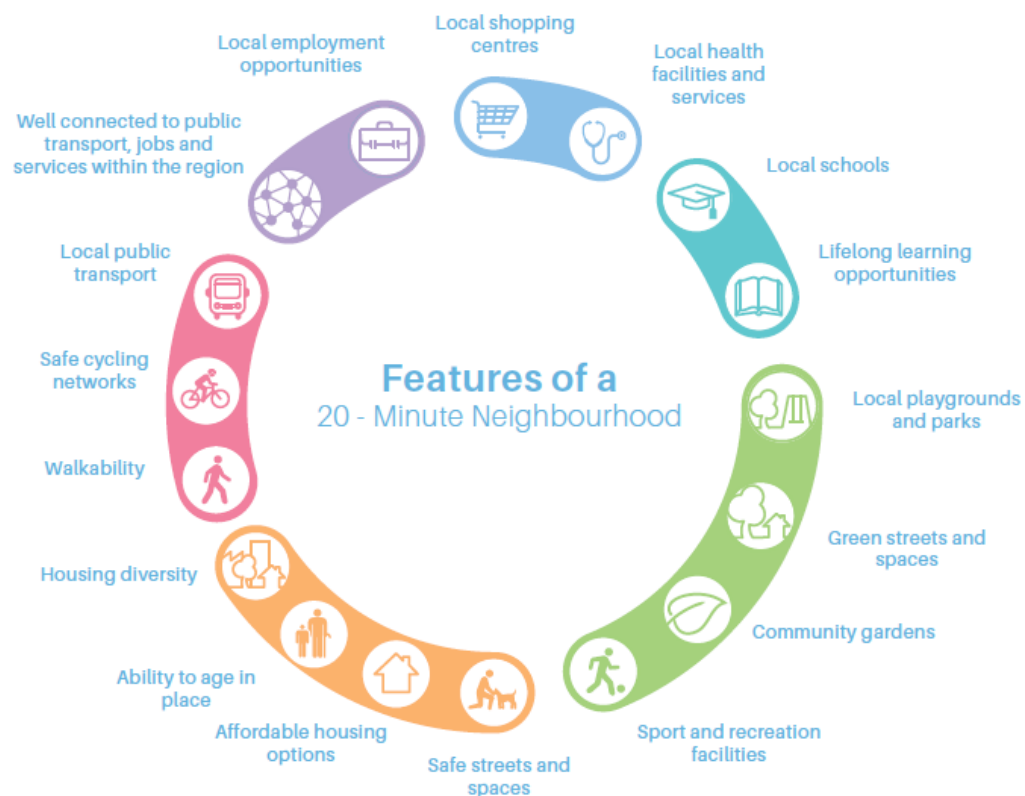
“y wyddoniaeth a’r gelfyddyd o atal afiechyd, ymestyn bywyd a hybu iechyd trwy ymdrechion cymdeithas wedi’u trefnu” (Acheson, 1988)

- Diogelu Iechyd
- Hybu Iechyd
- Gofal Iechyd

Mae cyn lleied â 10% o iechyd a llesiant poblogaeth yn gysylltiedig â mynediad at ofal iechyd. Gall cynllunio atal mwy o afiechyd nag y gall gofal iechyd byth ei drin ⁽¹⁾

As little as 10% of a population's health and wellbeing is linked to access to health care. Planning can prevent more disease than health care can ever treat ⁽¹⁾





A PROSPEROUS
WALES



A RESILIENT
WALES



A MORE EQUAL
WALES



A HEALTHIER
WALES



A WALES OF
COHESIVE
COMMUNITIES



A WALES OF
VIBRANT CULTURE
& THRIVING WELSH
LANGUAGE



A GLOBALLY
RESPONSIBLE
WALES

Mwy Cyfartal
More Equal

Iachach
Healthier

Cydnorth
Resilient

Llewyrchus
Prosperous

Cyfrifol ar Lefel
Fyd-eang
Globally
Responsible

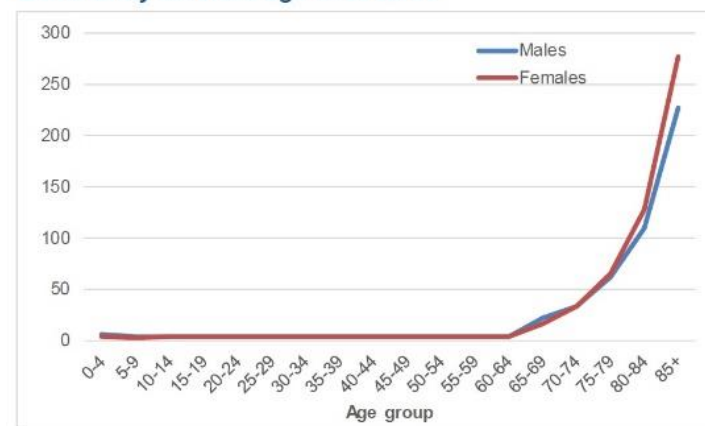
Diwylliant Bywiog Lle
mae'r Gymraeg yn Ffynnu
Vibrant Culture
and Thriving
Welsh Language

Cymunedau
Cydllynus
Cohesive
Communities

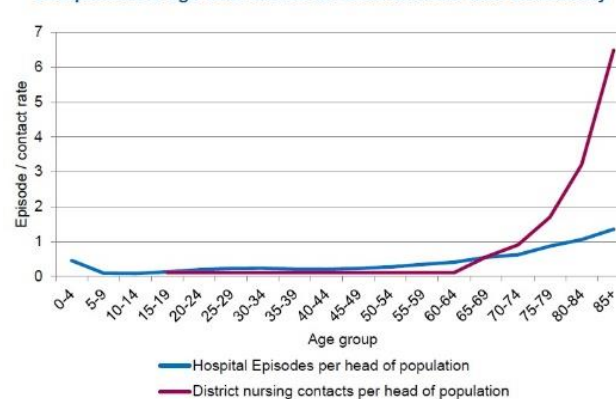


"Y GYMRU
A GAREM
THE WALES
WE WANT"

Community services age-cost curve

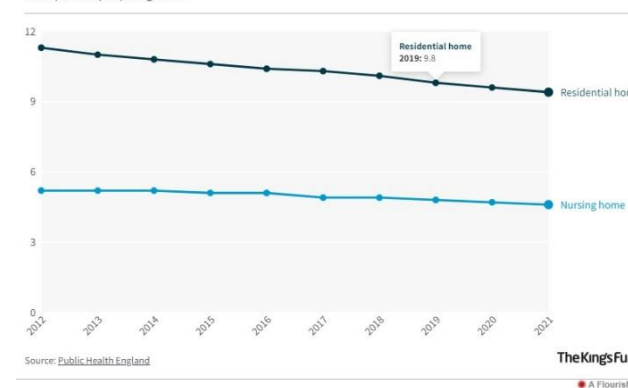


Comparison of age-cost curves for General Acute and Community

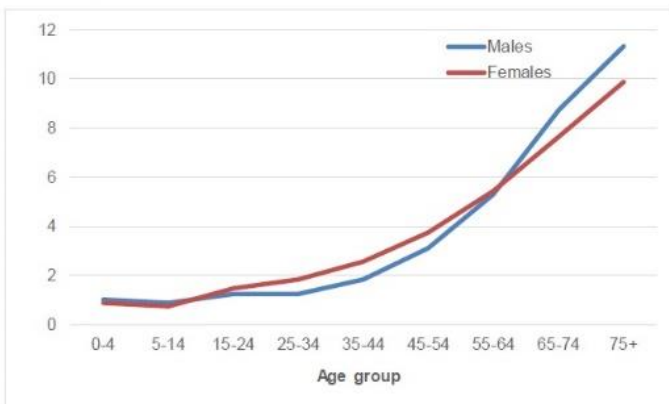


Compared to the size of the older population, the number of nursing and residential care home beds has consistently fallen over the past 9 years

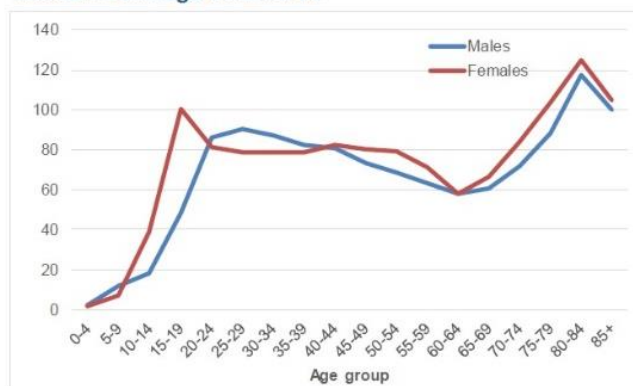
Beds per 100 people aged 75+



Prescribing Age-Cost

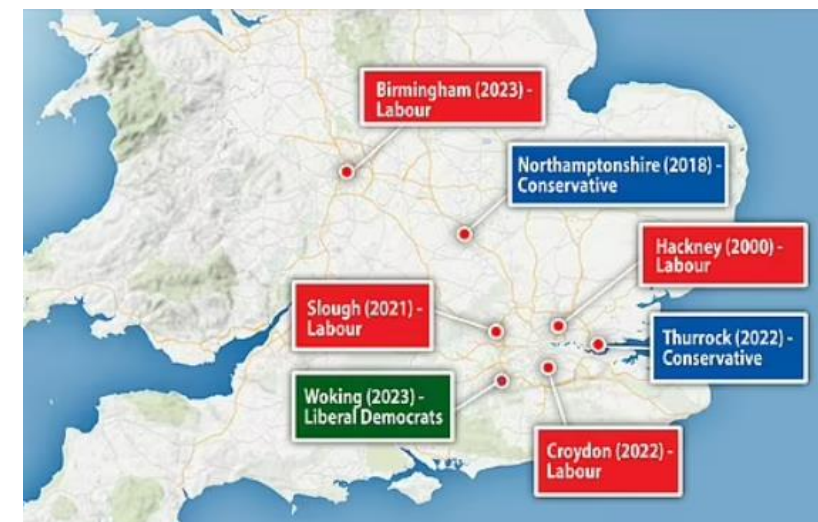


Mental health age-cost curve



[NHS: Technical Guide to Allocation Formulae and Pace of Change for 2019/20 to 2023/24](#)

[Kings Fund: Social care 360](#)



Cyllideb Pen-y-bont ar Ogwr

Cyngor Pen-y-bont ar Ogwr yn cytuno i gynnydd o 4.9% yn y dreth gyngor gyda thoriad o 2% i'r gyllideb addysg

Bydd cyllideb eleni yn cynnwys cyllideb net o £342 miliwn, a rhaglen buddsoddi cyfalaf ychwanegol o £69 miliwn.

Cyngor Pen-y-bont ar Ogwr yn cynnal cyfarfod arbennig dros bryderon ariannol difrifol ar ôl blynyddoedd o doriadau yn y gyllideb

Mae'r gyfarwyddiaeth cymunedau yn gyfrifol am nifer o wasanaethau allweddol y cyngor yn y fwrdeistref

Mae'r Cyngor yn adrodd gorwariant o bron i £10 miliwn yn y gyllideb yn chwarter cyntaf 2023-24

Clychau larwm yn canu dros gyllideb y cyngor

Bridgend Budget



Bridgend council agrees to 4.9% council tax increase with 2% cut to education budget

This year's budget will consist of a net budget of £342 million, and an additional capital investment programme of £69 million

Bridgend Council holds special meeting over serious money concerns after years of budget cuts

The communities directorate is responsible for a number of key council services in the borough

Council reports budget overspend of almost £10 million in first quarter of 2023-24

Alarm bells ring over council's budget



Glamorgan Star 19/07/2023

Ymyriadau Dylunio

- Byw'n lach yn Annibynnol am yn Hirach
 - Mannau gwyrdd, llwybrau cadw'n heini strategol, teithio llesol, rhwydweithiau cymdeithasol, mynediad at natur, Gweithgarwch Economaidd
- Dylunio Oed-gyfeillgar ac sy'n Deall Dementia
 - Llwybrau wedi'u marcio'n glir, llwybrau pren, amwynderau, byw gyda chymorth trwy ddyluniad a chartrefi
- Dyluniad sy'n Gyfeillgar i Niwroamrywiaeth
 - Seinweddau cadarnhaol, mannau cynhwysol, llonyddol a synhwyrol
- Dyluniad Addasol/Gwydn
 - Cartrefi sy'n Pontio'r Cenedlaethau
 - Gwefru cerbydau argyfwng ac unedau symudol
 - Dylunio ar gyfer newid yn yr hinsawdd a newid ffyrdd o fyw/gweithio

Design Interventions

- Healthy Independent Living for Longer
 - Green space, strategic trim trails, active travel, social networks, access to nature, Economic Activity
- Age and Dementia Friendly Design
 - Comprehensive wayfinding, boardwalk, amenities, assisted living through design and homes
- Neurodiversity Friendly Design
 - Positive soundscapes, inclusive calming and sensory spaces
- Adaptive / Resilient Design
 - Intergenerational Homes
 - Emergency Vehicle and mobile unit charging
 - Design for climate change and changing ways of living/working



Datrysiadau Isadeiledd

- Ysgol gyda galluoedd Anghenion Addysgol Arbennig ac Anabledd (AAAA) uchel
 - Ased cymunedol addasadwy, llyfrgell anghenion addysgol arbennig ac anableddau (AAAA), cyfleusterau chwarae
- Cartref Plant
 - Niwronodweddiadol / AAAA
- Canolfan Iechyd Cymunedol
 - Ategu'r Rhwydwaith Gofal Sylfaenol
 - Ymarferwyr Perthynol i Ofal Iechyd
 - Unedau sgrinio symudol amlswyddogaethol ac addasadwy
- Canolfan Gymunedol
 - Amwynder amlswyddogaethol, cefnogaeth a rhwydweithio
- Cartrefi ar gyfer gweithwyr allweddol

Infrastructure Solutions

- School with high SEND capabilities
 - Adaptable community asset, Special educational needs and disabilities (SEND) library, play facilities
- Children's Home
 - Neurotypical / SEND
- Community Health Hub
 - Compliment Primary Care Network
 - Allied Health Care Practitioners
 - Multifunctional, adaptable, mobile screening unit space
- Community Hub
 - Multifunctional amenity, support and networking
- Key worker Homes





A106 (Adran 106)

- Beth yw cyfraniadau A106 a pham mae eu hangen?
- Tystiolaeth o effaith ar iechyd neu ofal iechyd
- Profion Rheoliad 122:
 - ✓ angenrheidiol i wneud y datblygiad yn dderbyniol o ran cynllunio;
 - ✓ yn uniongyrchol gysylltiedig â'r datblygiad; ac
 - ✓ yn deg ac yn rhesymol berthnasol o ran maint a math i'r datblygiad
- Datblygiadau o Arwyddocâd Cenedlaethol (DNS) – tai
- Os na basiwyd y profion -> risg o ddehongli "prynu" cais

S106



- What are S106 contributions and why are they needed?
- Evidence of an impact on health or health care
- Reg 122 tests:
 - ✓ necessary to make the development acceptable in planning terms;
 - ✓ directly related to the development; and
 - ✓ fairly and reasonably related in scale and kind to the development
- DNS – housing
- If tests not met -> risk of interpretation of “buying” an application



- **Manteision:** disgyn yn ôl, cynyddrannol a chronnus
- **Anfanteision:** adweithiol, oedi, gellir ei herio, gellir mynnu'r cyllid yn ôl os na chaiff ei wario fel y bwriadwyd, yn rhoi cyfrifoldeb i gyflawni, **dim ond yn defnyddio mwg ei hun**
- Nid yw tai yn creu pobl
- Cyllid y GIG
- **Pro's:** fall back, incremental and cumulative
- **Cons:** reactive, delayed, can be challenged, can be demanded back if not spent as intended, places responsibility to deliver, **only consumes own smoke**
- Housing does not create people
- NHS funding

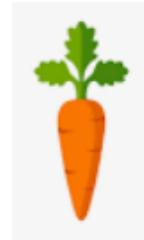
Yr Heriau

Challenges

- Datgysylltu: iechyd - cynllunio
 - Cyfleoedd a gollwyd
 - Sut ydych chi'n cyfrif am ddylunio trefol iach
 - Pwy sy'n arwain (GIG, Ystadau, Ymddiriedolaethau, Bwrdd Iechyd, Meddyg Teulu)
- Amseru
- Diffyg tryloywder mewn ceisiadau gofal iechyd A106
- Y dull a gymerwyd: Uned Datblygu Trefol Iach (HUDU) v costau adeiladu
- Risg o adolygiad barnwrol (os yw'r cyfraniad y cytunwyd arno yn rhy hael, ac nad yw'n bodloni profion Rheoliad 122)
- Disconnect: health - planning
 - Missed opportunities
 - How do you account for healthy urban design
 - Who leads (NHS, Estates, Trusts, HB, GP)
- Timing
- Lack of transparency in S106 healthcare requests
- Approach taken: HUDU v build costs
- Judicial review risk (if the agreed contribution is too generous, and does not meet the Reg 122 tests)

- Nodi amgylchiadau iechyd lleol ac anghenion gofal iechyd.
- Diffinio dylunio trefol iach lleol a blaenoriaethau gofal iechyd.
- Ei gwneud hi'n hawdd i ddatblygwyr gyflwyno nodweddion creu lleoedd iach a'i ystyried yn y broses gynllunio.
- Ei gynnwys mewn Asesiad o'r Effaith ar Iechyd (llywio cynllunio trwy linell sylfaen o ofal iechyd, problemau, cyfleoedd a datrysiadau dylunio).

- Set out local health circumstance and health care need.
- Define local healthy urban design and health care priorities.
- Make it easy for developers to deliver healthy placemaking features and consider it in the planning process.
- Build it into HIA (informing planning through a baseline of health care, issues, opportunities and design solutions).



Sesiynau grŵp

Breakout Session

Cwestiynau

- Ydych chi wedi gweithio ar senario fel hyn? (Achos Damcaniaethol)
- Oeddech chi'n gallu gwella'r datblygiad gyda chyfraniadau Adran 106?
- Beth oedd y rhwystrau, yr heriau a'r datrysiadau?

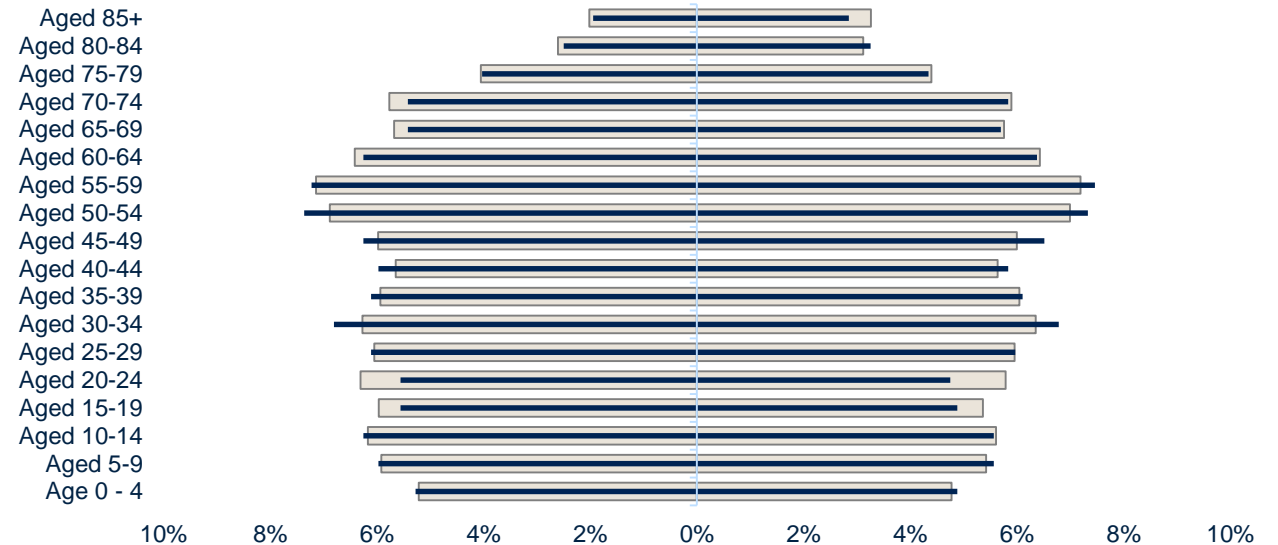
Questions

- Have you worked on a scenario like this? (Hypothetical Case)
- Were you able to enhance the development with Section 106 contributions?
- What were the barriers, challenges and the solutions?

Hypothetical Case 1: Urban Extension

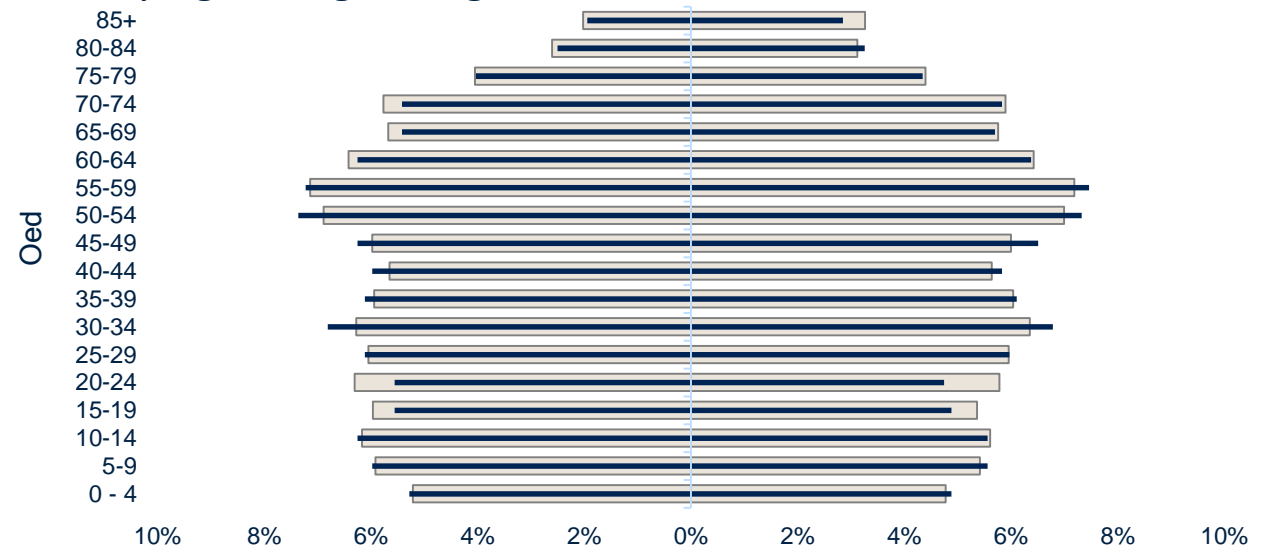


- Approx. 1,100 new homes of mixed tenure;
- Minimum 30% affordable homes;
- Potential for commercial and community uses;
- Small GP surgery, at capacity, old building, trouble recruiting staff;
- Insufficient/inadequate housing, kids moving out, elderly moving into care;
- Host community aging population, high burdens of poor health, low physical activity.





- Tua 1,100 o gartrefi newydd â deiliadaeth gymysg;
- O leiaf 30% yn gartrefi fforddiadwy;
- Potensial ar gyfer defnyddiau masnachol a chymunedol;
- Practis meddyg teulu bach, yn llawn, hen adeilad, trafferth recriwtio staff;
- Tai annigonol/anaddas, plant yn symud allan, pobl hŷn yn symud i ofal;
- Lletya poblogaeth sy'n heneiddio yn y gymuned, baich trwm iechyd gwael, gweithgarwch corfforol isel.





Dr Andrew Buroni
Director – Health / Social Impact
Andrew.buroni@savills.com
+44 (0)7977 949360