

# Climate Change Risk Assessment (CCRA) Framework for PSBs

## Fframwaith Asesu Risg Newid Hinsawdd ar gyfer Byrddau Gwasanaethau Cyhoeddus



# **What we'll cover**

## **Beth fyddwn ni'n ei drafod**

- **Why?**
- **Who has NRW worked with?**
- **Timeline**
- **Steps in the framework**

# Why are we doing this?

## Pam rydyn ni'n gwneud hyn?

***Section 38 of the Well-being of Future Generations Act requires Public Service Boards (PSBs) to take account of the latest UK Climate Change Risk Assessment (CCRA) when preparing their Well-being Assessments.***

This framework has been created by NRW in collaboration with the Welsh Government and Public Health Wales, for use by PSB practitioners.

# Why come up with a new Framework?

## Pam llunio fframwaith newydd?

“This guidance is the first step towards a climate adaptation strategy. It will consider climate change risk in a local context.

This should be a collaborative process, that empowers partners to interpret their own climate risk in the context of well-being.”

# Who have we worked with?

Gyda phwy rydyn ni wedi gweithio?



# Timeline

## Llinell Amser

- **Up to 16th Oct** – produce draft guidance
- **w/c 18th Oct** – approval of first draft for sharing (NRW, WG)
- **24th Oct to 4th Dec** – share draft with partners locally and nationally for feedback / sense-checking
- **4th Dec to 15th Dec** – incorporate feedback and produce final draft
- **w/c 18th Dec** – approval of final draft (NRW, WG)

# The Framework

## Y Fframwaith

- **Step 1 – Plan your approach**
- **Step 2 – Consider past and present climate impacts**
- **Step 3 – Looking ahead**
- **Step 4 – Risk prioritization**
- **Step 5 – Iteration**

# Step One – Plan your approach

## Cam Un - Cynllunio eich Dull





# Step Two – Consider past and present climate impacts

**Cam Dau - Ystyried effeithiau'r hinsawdd ddoe a heddiw**



# Step Three – Looking ahead

## Cam Tri - Edrych tua'r dyfodol



The University of Exeter is leading a consortium of experts who are preparing the technical chapters for the Technical Report in partnership with the Met Office.

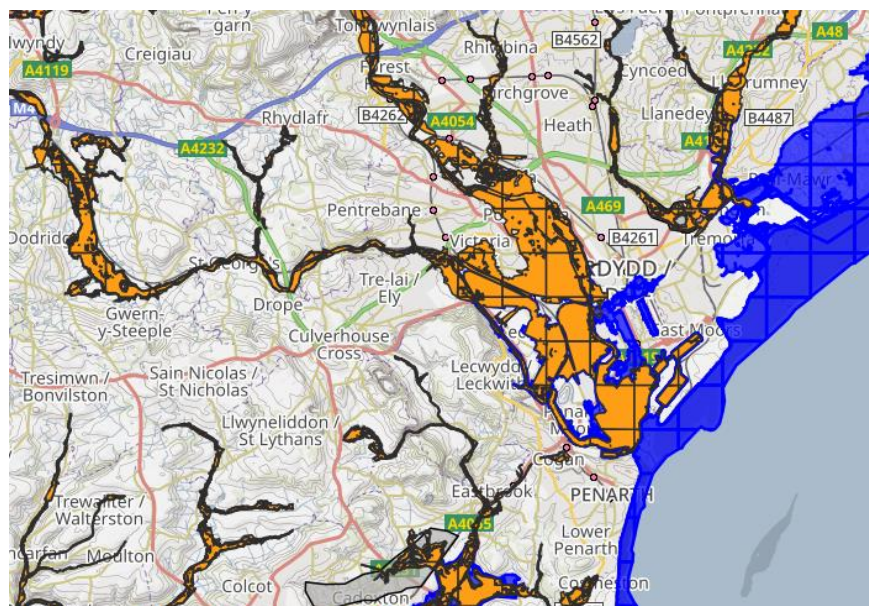
Health, Communities and the Built Environment			
Risk or Opportunity	Risk number and Receptor	Nature of risk/opportunity	Urgency Score
RISKS	<a href="#">H1. Health and wellbeing</a>	High temperatures	More action needed
RISKS	<a href="#">H3. People, communities and buildings</a>	Flooding	More action needed
RISKS	<a href="#">H4. Viability of coastal communities</a>	Sea level rise	More action needed
RISKS	<a href="#">H5. Building fabric</a>	Moisture, wind and driving rain	Further investigation
RISKS	<a href="#">H7. Health and wellbeing</a>	Changes in indoor and outdoor air quality	Further investigation
RISKS	<a href="#">H8. Health</a>	Vector-borne disease	Further investigation
RISKS	<a href="#">H9. Food safety and food security</a>	Higher temperatures (food safety) and extreme weather (food security)	Further investigation
RISKS	<a href="#">H10. Health</a>	Poor water quality and household water supply interruptions	Further investigation
RISKS	<a href="#">H11. Cultural heritage</a>	Changes in temperature, precipitation, groundwater, land, ocean and coastal change	More action needed
RISKS	<a href="#">H12. Health and social care delivery</a>	Extreme weather	More action needed

A Category 1: Interaction between determinants of a risk

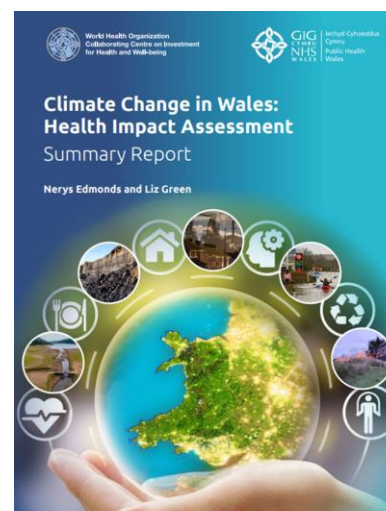
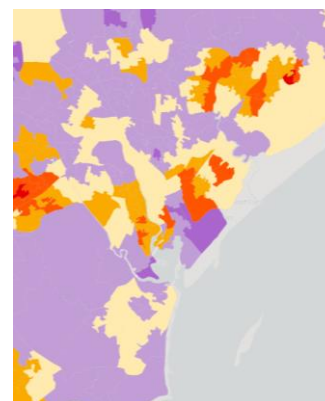


# Step Three – Looking ahead

## Cam Tri - Edrych tua'r dyfodol



Climate Just



Flooding

Heat

Government agency maps

Admin

Collapse all

Expand all

Neighbourhood Flood Vulnerability Index

Susceptibility

Susceptibility

Age

Vulnerability due to age

Young children (% people under 5 years)

Older people (% people over 75 years)

Health

Vulnerability due to health

Disability / people in ill-health (% people whose day-to-day activities are limited)

% households with at least one person with long term limiting illness

Inability to prepare

Inability to respond

Inability to recover

Community support

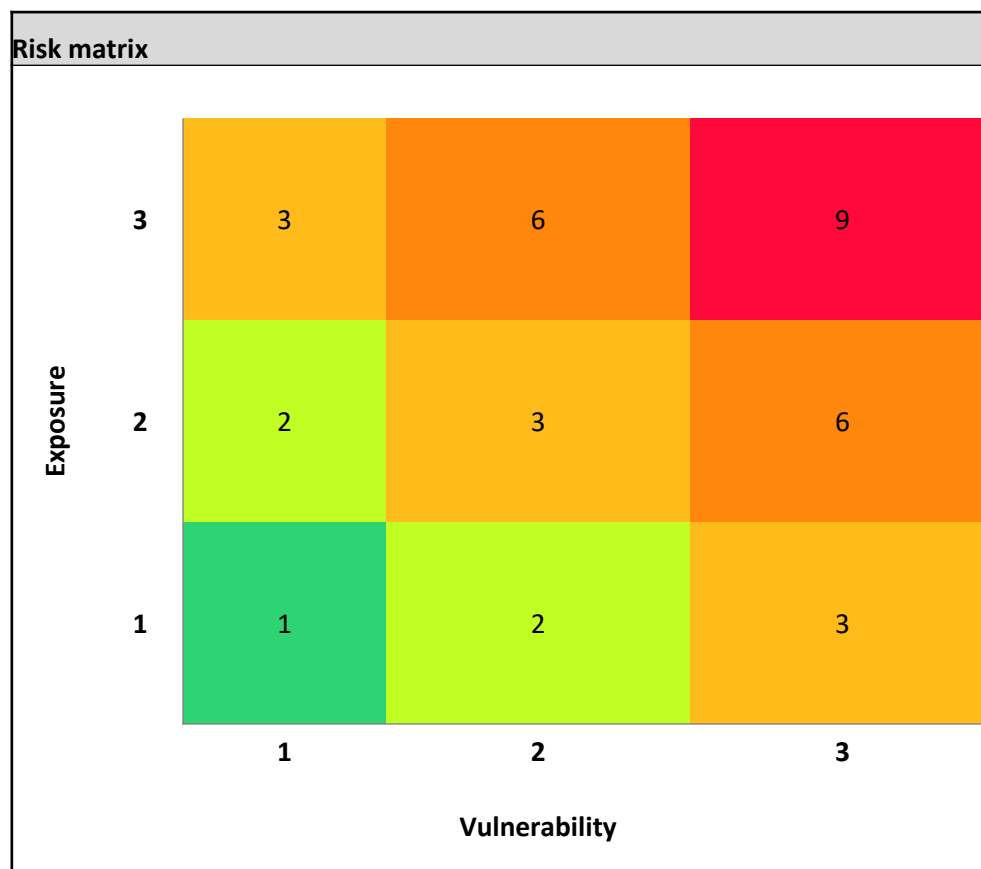
Social Flood Risk Index

River & Coastal

Surface water

# Step Four – Prioritising Risk

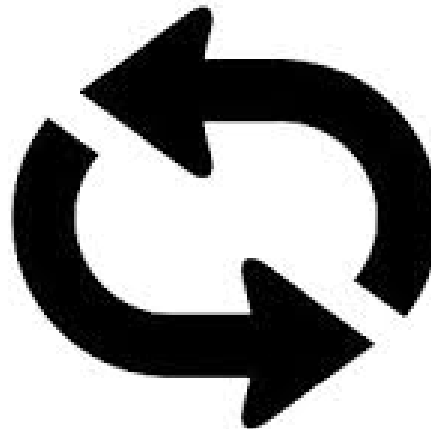
## Cam 4 - Blaenoriaethu risg



---

# Step Five – Iteration

## Cam 5 - Ailadrodd Asesu



# What's your role? Beth yw eich rôl?



**Any questions?**  
**Unrhyw gwestiynau?**

**DIOLCH / THANK YOU**