

Dull ysgol gyfan ar gyfer llesiant emosiynol a meddyliol

Whole School Approach to Emotional and Mental Wellbeing

Amy Davies; Principal Public Health Practitioner

8 September 2022

8 Medi 2022



GIG
CYMRU
NHS
WALES

Iechyd Cyhoeddus
Cymru
Public Health
Wales

Contents

Cynnwys

- About the Whole School Approach to Emotional and Mental Wellbeing
- Evaluation findings
- Complementary action
- Am y dull ysgol gyfan ar gyfer llesiant emosiynol a meddyliol
- Canfyddiadau gwerthuso
- Gweithredu cyflenwol

Whole school approach

Dull ysgol gyfan

- Recognises that every aspect of school life can impact on health and wellbeing
- Considers all aspects of need
- March 2021 Welsh Government issued the framework *embedding a whole-school approach to emotional and mental well-being* as statutory guidance
- Cydnabod y gall pob agwedd ar fywyd ysgol effeithio ar iechyd a lles
- Mae'n ystyried pob agwedd ar angen
- Mis Mawrth 2021 cyhoeddodd Llywodraeth Cymru y fframwaith sefydlu dull ysgol gyfan ar gyfer llesiant emosiynol a meddyliol fel canllawiau statudol



Framework on embedding a whole-school approach to emotional and mental well-being



Guidance

Guidance document no: 269/2021
Date of issue: March 2021



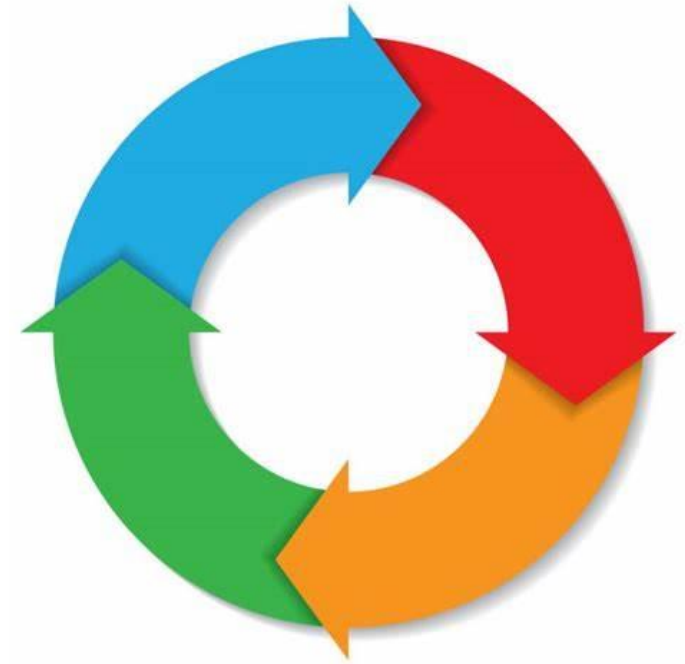
GIG
CYMRU
NHS
WALES

Iechyd Cyhoeddus
Cymru
Public Health
Wales

Continuous improvement

Gwelliant parhaus

- Embed ways of working
- Guidance and tools are provided to support schools to self-evaluate their needs and strengths
- Implementation coordinator support
- What Works Toolkit
- Ymgorffori ffyrdd o weithio
- Darperir canllawiau ac offer i gefnogi ysgolion i hunanwerthuso eu hanghenion a'u cryfderau
- Cymorth cydlynedd gweithredu
- Pecyn Cymorth Beth Sy'n Gweithio



Areas of Whole School Approach

Adrannau o ddull ysgol gyfan

- Leadership and Commitment
- Understanding and meeting the needs of the school community
- Involvement and Engagement
- Workforce
- Relationships
- Help and Support
- School Environment
- The Curriculum
- Arweinyddiaeth ac Ymrwymiad
- Deall a diwallu anghenion y gymuned ysgol
- Ymglymiad ac Ymgysylltiad
- Gweithlu
- Perthnasoedd
- Help a chefnogaeth
- Amgylchedd yr Ysgol
- Y Cwricwlwm

Evaluation: Phase one, describe implementation to date

Gwerthusiad: Cam un, disgrifio'r gweithredu hyd yma

-
- Interviews with all implementation coordinators
 - School survey n=50, 73% response rate
 - Thematic analysis
 - Cyfweiliadau gyda'r holl gydlynwyr gweithredu
 - Arolwg ysgolion n=50, cyfradd ymateb 73%
 - Dadansoddiad thematig

Evaluation: Phase one, school perspectives

Gwerthusiad: Cam un, safbwyntiau ysgolion

"The process has been most encouraging and opened up lines of communication"

"The support so far has been fantastic"

"Mae cynnwys y gymuned ehangach yn y broses hunanarfarnu wedi bod yn anodd ar adegau." / "Involving the wider community in the self-evaluation process has been difficult at times"

"Time, it is the only barrier we face. If well-being leads were given more time allocated to supporting the implementation and review stages we would be way ahead in achieving our vision."

"Just not a whole school approach but a whole agency support approach as well"

"Partnership working has been invaluable and it's really grown in strength"

Evaluation: Phase one, conclusions

Gwerthusiad: Cam un, casgliadau

- Highly valued by schools and professional stakeholders
- Strengthening of cross-sector partnerships locally
- Recognition of benefits that the approach brings
- Time and competing demands are the key areas of challenge
- Ysgolion a rhanddeiliaid proffesiynol yn gwerthfawrogi'r dull ysgol gyfan
- Gryfhau partneriaethau traws-sector yn lleol
- Cydnabod y manteision posibl a ddaw yn sgil y dull hwn
- Amser a galwadau sy'n cystadlu yw'r prif feysydd her.

Evaluation: Phase one, recommendations

Gwerthusiad: Cam un, argymhellion

- Strategic accountability and leadership
- Improving guidance and tools
- Supporting engagement and whole school ethos
- Atebolrwydd strategol ac arweinyddiaeth
- Gwella canllawiau ac offer
- Cefnogi ymgysylltiad ac ethos ysgol gyfan

Evaluation: Phase two, self-evaluation case study

Gwerthusiad: Cam dau, astudiaeth achos hunan-werthuso

- What works, why, for whom and in what circumstances
- Interviews with school staff
- School survey
- Documentary analysis
- Beth sy'n gweithio, pam, i bwy, ac ym mha amgylchiadau
- Cyfweiliadau â staff ysgol
- Arolwg ysgolion
- Dadansoddi dogfennau



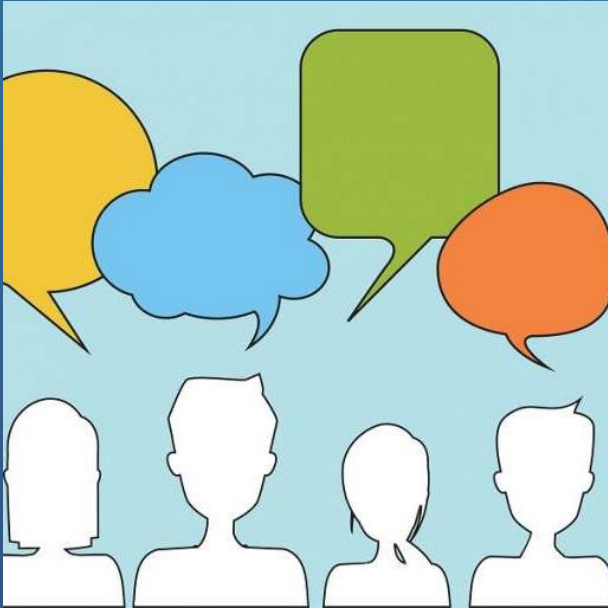
Evaluation: Phase two, emerging findings

Gwerthusiad: Cam dau, canfyddiadau cynnar



Complementary action

Gweithredu cyflenwol



Diolch

amy.davies8@wales.nhs.uk